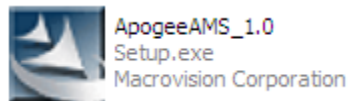


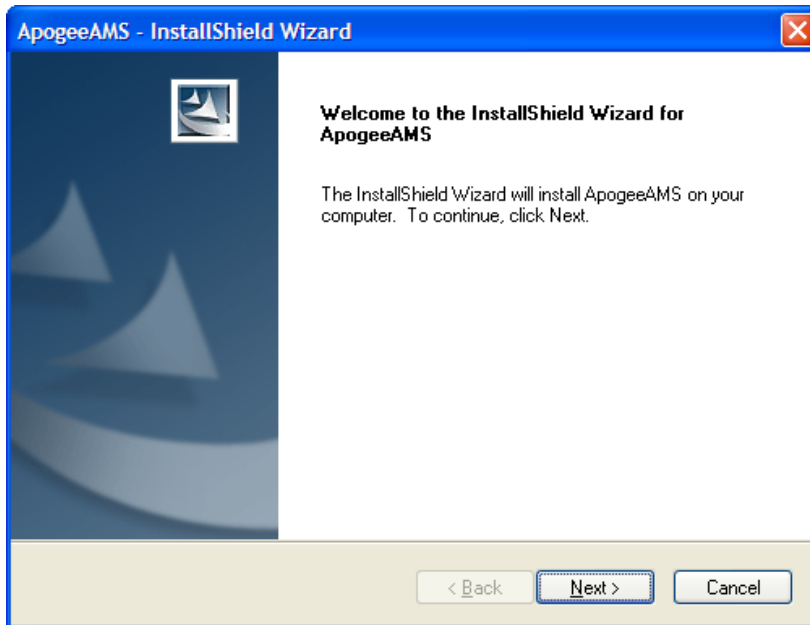
Installing the Software

You must be signed in as an administrator on your computer in order to install ApogeeAMS



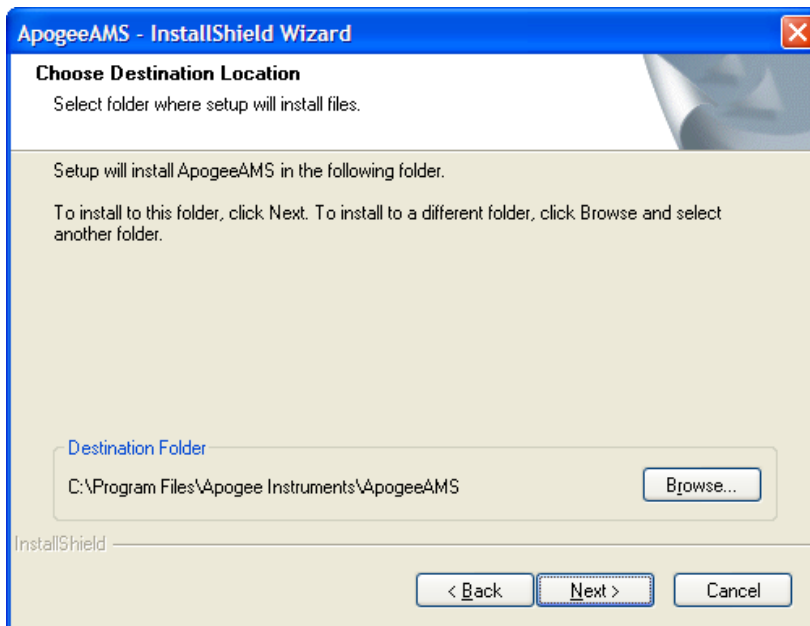
First, double click this icon:

It will bring up this screen:



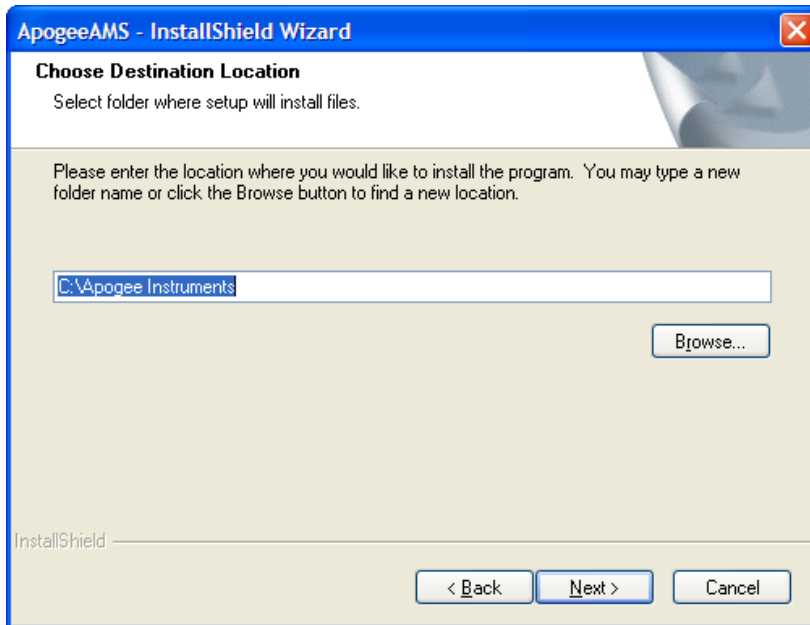
Click **Next**.

This screen will appear:



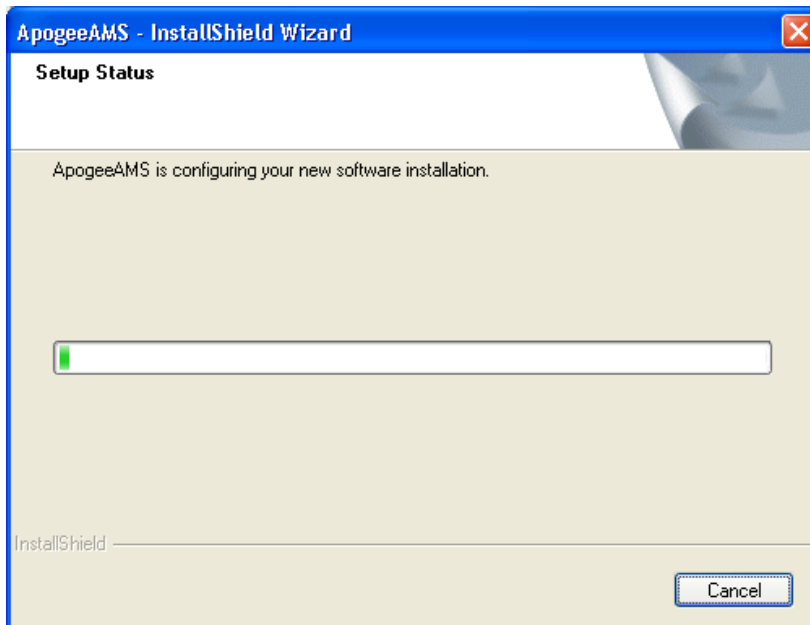
Click **Next**.

This screen will appear:



Click **Next**.

This screen will appear:



Wait until the installation is done and click **Finish**.

Cable Drivers Installation

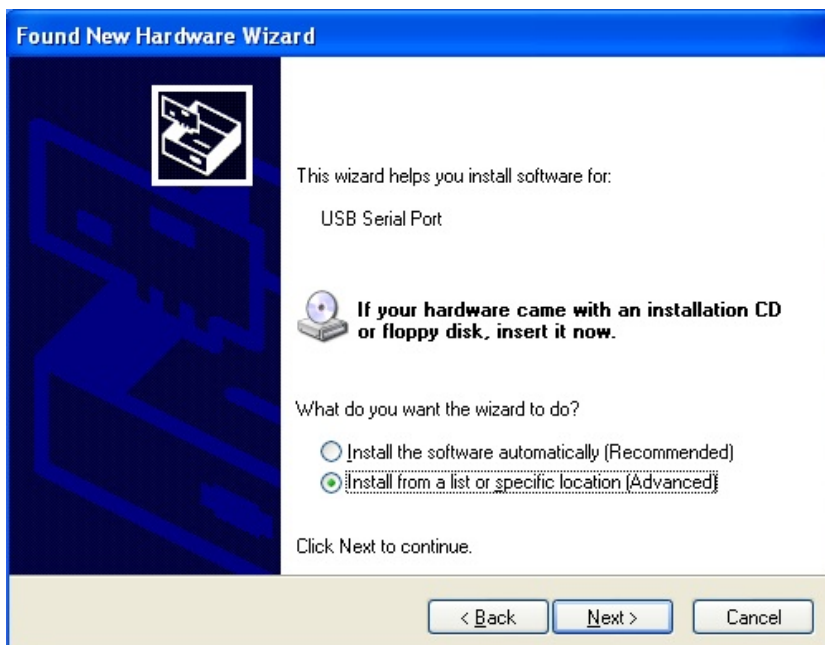
Insert cable into a USB port on your computer.

Wait until Windows is done loading and this screen should appear:



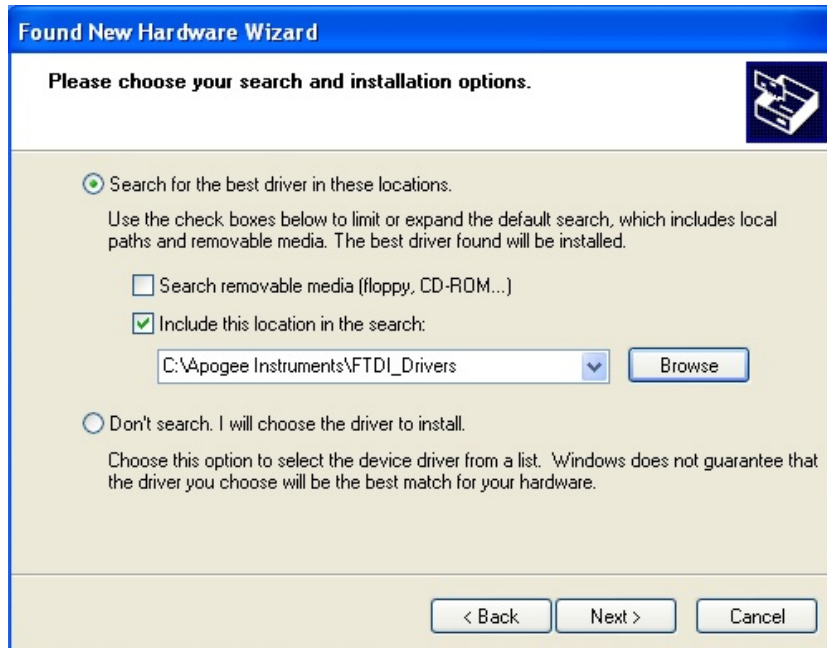
Select “No, not this time” and click **Next**.

This screen will appear:



Select “Install from a list or specific location” and click **Next**.

This screen will appear:



Select “Search for the best driver in these locations”.

Deselect “Search removable media”.

Click **Browse**. Select the folder FTDI_Drivers in the Apogee Instruments folder on your hard drive as shown above.

If you are using a 64-bit operating system use the drivers included on the flash drive sent to you with the cable.

Click **Next**.

If this screen appears, click “Continue Anyway”.



This screen will appear:



Click **Finish**.

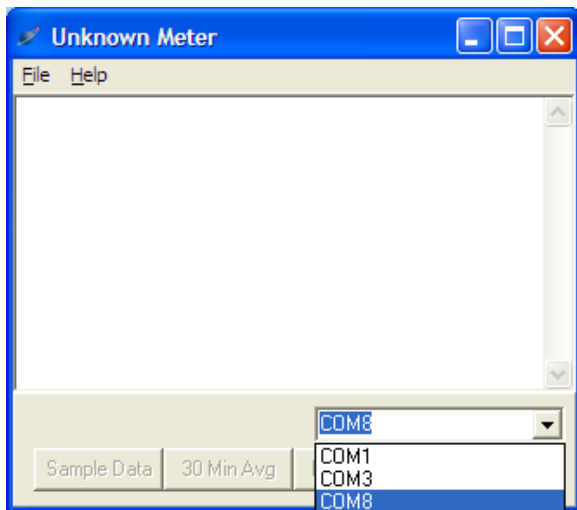
Using ApogeeAMS

Insert cable into both a USB port on your computer and the meter.

Do not use a different cable. Even if it looks the same it will not work.

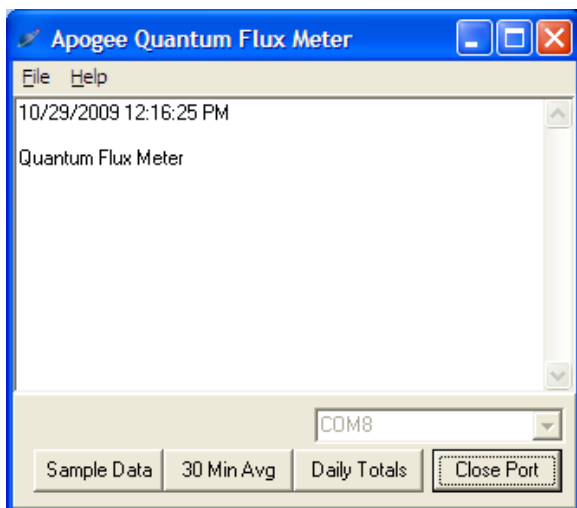
Open ApogeeAMS.

Change your comport using the dropdown box. If several are listed, select the last option. Your comport number will never change so the cable only needs to be installed once.



After the comport is selected, click **Open Port**.

It should look like this although the name of the meter will change according to your model:

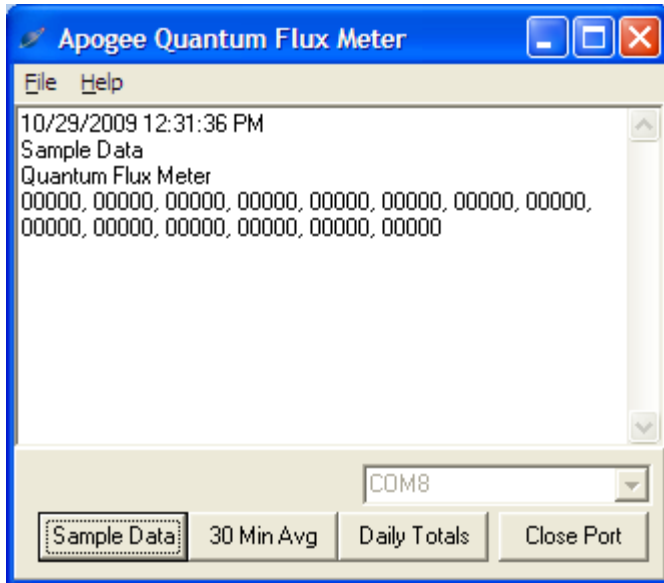


If it says "Unknown Meter", something is wrong. Go back and make sure you have done everything correctly. Also try changing the comport being used, until you find the correct one.

You are now ready to collect the data by clicking on one of the buttons shown (Sample Data, 30 Min Avg, Daily Totals)

Sample Data

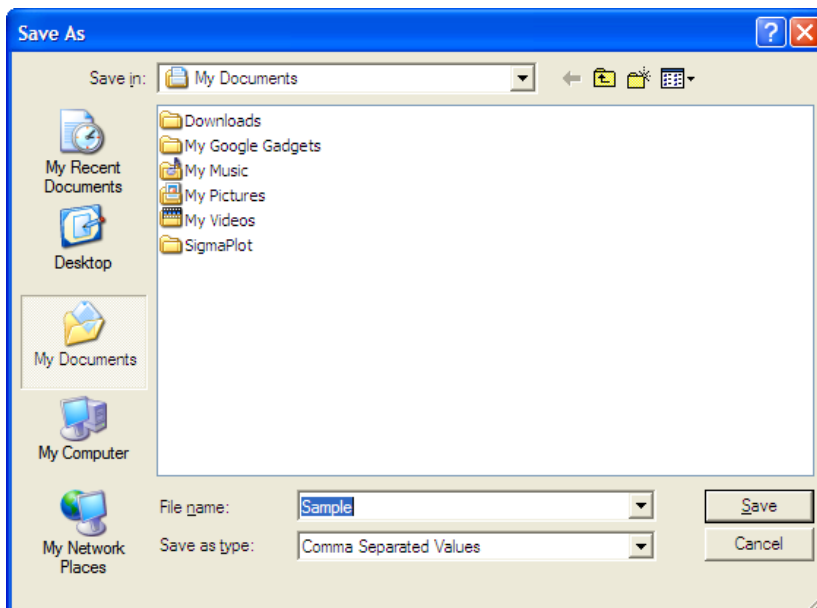
This is the data that you have stored manually. You may store up to 99 measurements.



The data are output on the screen as shown above.
It can be transferred to a spreadsheet in one of two ways:

Save as:

Go to File -> Save as. This will bring up the page below. Save to desired folder. It should be saved as a Comma Separated Values (CSV) file type. This will allow you to open it in a spreadsheet and have the data in one column instead of in one row.

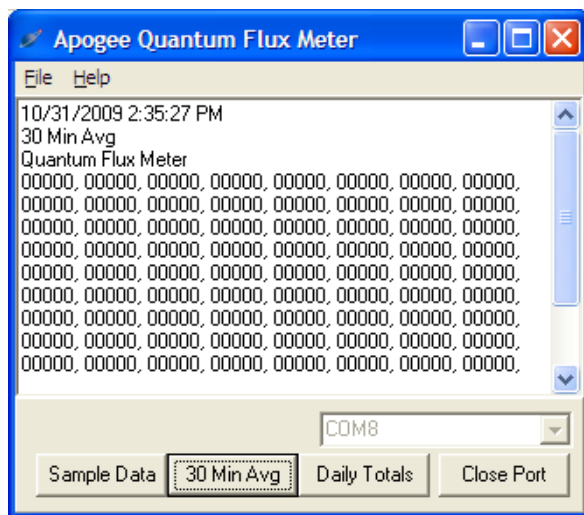


Export to Clipboard

Go to File -> Export to Clipboard. Then open a spreadsheet and paste it in. It should be in one column.

30 Minute Average Data

This is the data that you have stored in Log mode. There are 99 data points. The time stamp tells you when you downloaded the data. You can use that to figure out when the other measurements were taken.

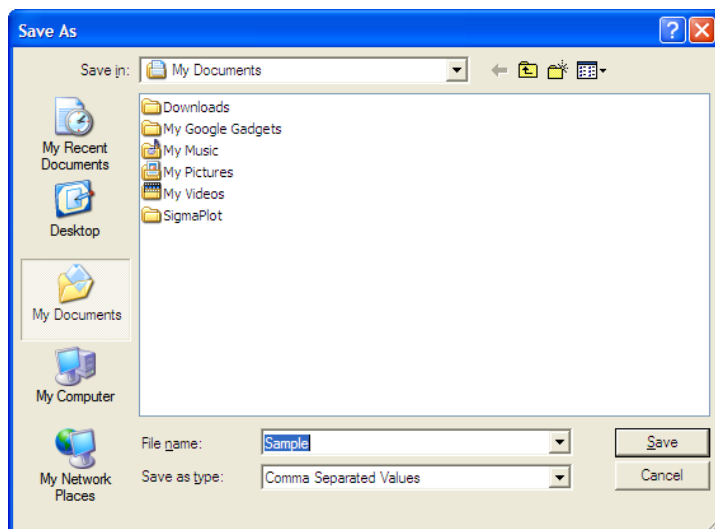


The data are output on the screen as shown above.

It can be transferred to a spreadsheet in one of two ways:

Save as:

Go to File -> Save as. This will bring up the page below. Save to desired folder. It should be saved as a Comma Separated Values (CSV) file type. This will allow you to open it in a spreadsheet and have the data in one column instead of in one row.

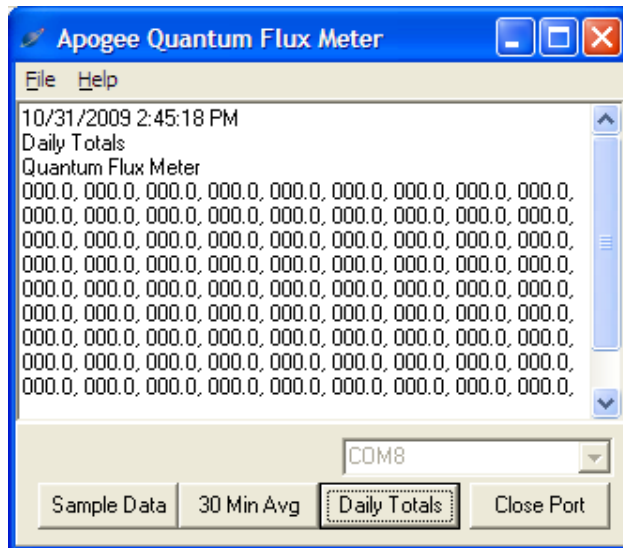


Export to Clipboard

Go to File -> Export to Clipboard. Then open a spreadsheet and paste it in. It should be in one column.

Daily Total Data

This records the daily total of the 30-minute averages. There is a maximum of 99 daily totals saved. They are only viewable using ApogeeAMS.

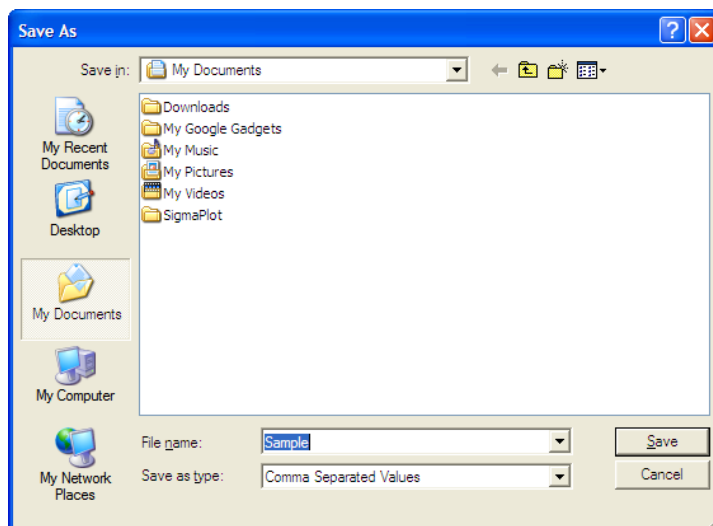


The data are output on the screen as shown above.

It can be transferred to a spreadsheet in one of two ways:

Save as:

Go to File -> Save as. This will bring up the page below. Save to desired folder. It should be saved as a Comma Separated Values (CSV) file type. This will allow you to open it in a spreadsheet and have the data in one column instead of in one row.



Export to Clipboard

Go to File -> Export to Clipboard. Open a spreadsheet and paste it in. It should be in one column.

Troubleshooting